

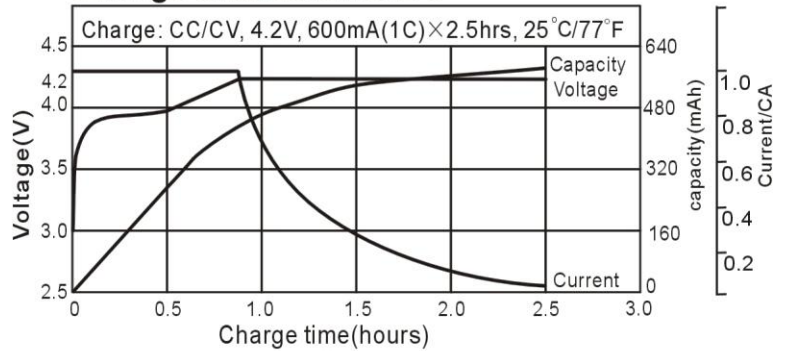
BYD Li-ion Battery Individual Data Sheets

LP033450A

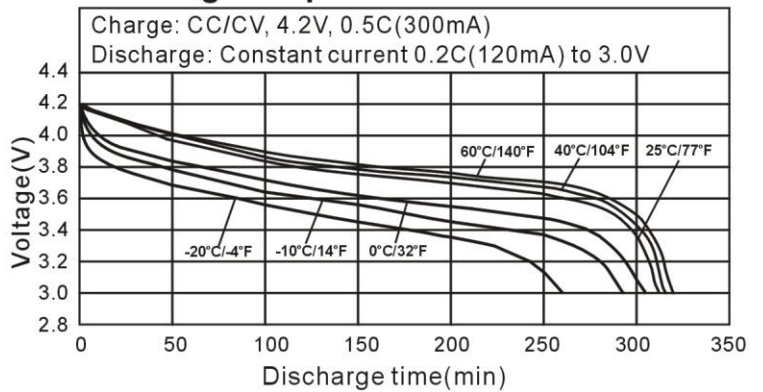
Specifications

Nominal Voltage		3.7V	
Capacity (mAh)		0.2C Discharge	
	Minimum	550mAh ²	
	Typical ³	600mAh	
Dimensions	Thickness	mm	inch
		3.9 ^{0.0} _{-0.4}	0.154 ^{0.0} _{-0.016}
		Width	34.0 ^{0.0} _{-0.5}
	Height	50.0 ^{0.0} _{-0.6}	1.378 ^{0.0} _{-0.024}
Weight *		Grams	Ounces
		15	0.53
Internal impedance* at 1000Hz		<70 m Ω (After charge)	
Charge	Standard	300mA(0.5C)×5hrs	
	Rapid	600mA(1C)×2.5hrs	
Ambient temperature	Charge	°C	°F
		0°C to 45°C	32°F to 113°F
	Discharge	-20°C to 60°C	-4°F to 140°F
	Storage	-20°C to 45°C	-4°F to 113°F

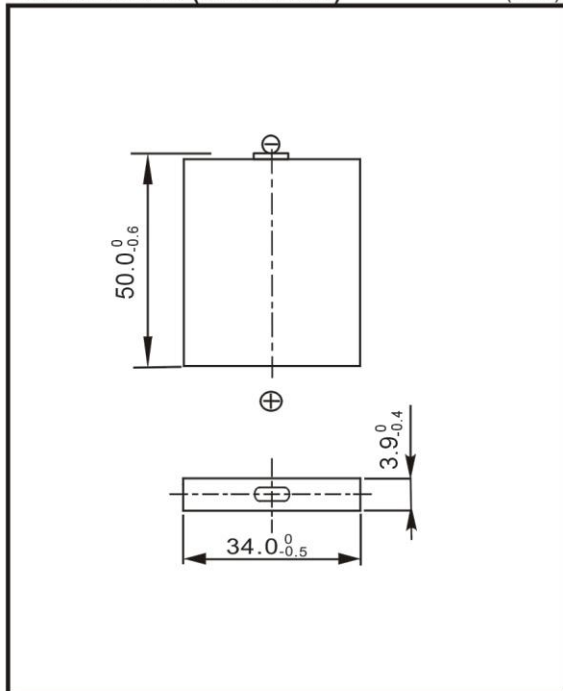
Charge characteristics



Discharge temperature characteristics



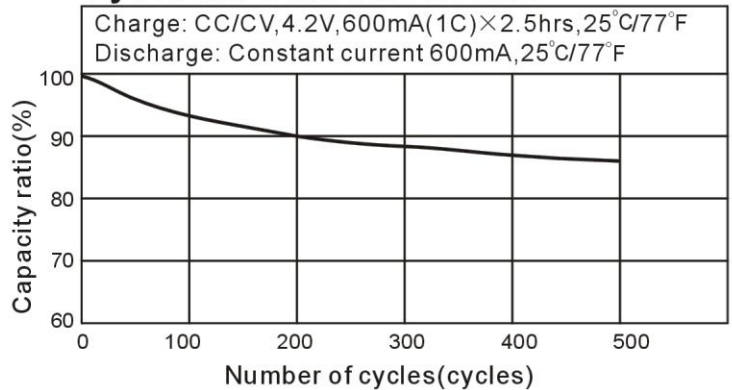
Dimensions(bare cell) (mm)



Note:

1. After charging at 1C for 2.5 hours.
 2. Nominal capacity, rated at 0.2C, 25°C/77°F.
 3. Average capacity. For reference only.
- *. Weight and internal impedance are for reference.

Cycle life characteristics



Storage characteristic

